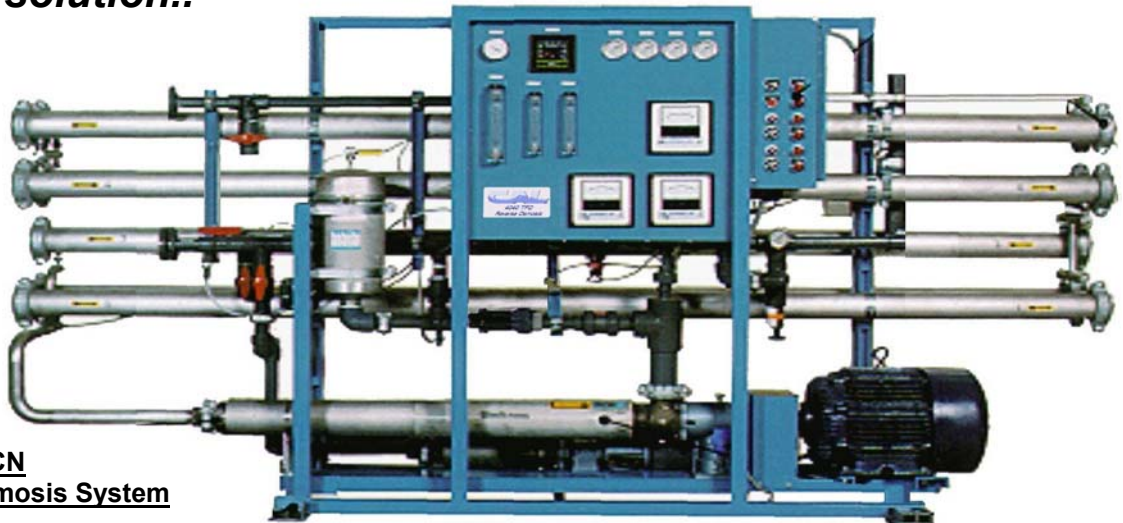




WATER

"a better solution.."

Reverse Osmosis Systems E4H-ECN Series 16,200 to 43,200 Gallons Per Day



E4H-21K-ECN
Reverse Osmosis System

The **E4H-ECN Series** Reverse Osmosis units (RO) are high performance systems that are both simple to operate and highly energy efficient. They feature product to brine ratios that conserve water and reduce pre-treatment costs. They are equipped with the new Osmonics® low-pressure membranes, and energy efficient pumps. The result is a series of RO systems that are environmentally friendly with low operating costs. A wide variety of options allow the E4-ECN to be used in any application within the capacity of the system.

FEATURES

- Low-pressure, high-rejection spiral wound modules that feature turbulent flow for the ultimate in fouling resistance.
- Quiet, high efficiency pump.
- Side-entry stainless steel housings for easy installation and maintenance.
- All components that come in contact with the product water are either inert plastic or stainless steel. All stainless steel welding is done using tungsten inert gas (TIG).
- Sanitization port for membrane sterilization.
- Compact frame with a small footprint that will accept additional housings for greater capacity. The frame comes standard with leveling feet.
- Panel mounted instrumentation for easy reading.
- All components are factory tested.
- A built-in polypropylene 5-micron pre-filter cartridge
- All wetted materials are compatible with peracetic acid-based sanitization agents.
- Complete instruction Manual.
- Fast, responsive factory and dealer support on any problem or question.

For More Information Please Call
1(800)CAL-WATER - (800) 225-9283

OPTIONS

- Complete pH buffer system including chemical feed pump mounted on the unit, injection ports, and a day tank for acid.
- Auto Flush system.
- Clean In Place (CIP) system.
- Pre-wired NEMA 4X/IP66 motor starter
- Panel mounted percent rejection meter.
- ECM-100 Solid-state controller/monitor.
 - Comprehensive alarm package with user adjustable limits and timers.
 - Central, easy to read alarm display w/status indicator lights.
 - RS-232 comm. Port to download data to a computer.
- **Cal Water support**, including service contracts. (Limited – **OR** – Turnkey.)

APPLICATIONS

E4-ECN Series Reverse Osmosis are ideal for any commercial or industrial application of the appropriate size where low cost and absolute reliability are key purchasing considerations.

SIZING AND SELECTION

Model	Nominal GPD @ 77F	Recovery Range	Product gpm	Feed GPM @		Inlet Pipe Size	Elements		Pump HP	Dimensions			Shipping Weight
				66%	75%		No.	Array		H	W	D	
E4H- 16 K	16,200	66-75%	11.3	17	15	1 1/2"	9	2-1	7.5	61"	77"	34"	700
E4H- 21 K	21,600	66-75%	15.0	23	20	1 1/2"	12	2-2	7.5	61"	77"	34"	1300
E4H- 27 K	27,000	66-75%	18.8	28	25	1 1/2"	15	3-2	10.0	61"	77"	34"	1500
E4H- 38 K	37,800	66-75%	26.3	40	35	1 1/2"	21	4-3	15.0	61"	77"	34"	1700
E4H- 43 K	43,200	66-75%	30.0	45	40	1 1/2"	24	5-3	15.0	61"	77"	34"	2000

Minimum inlet pressure is 35 psi. Maximum chlorine or other oxidizer content is 0.1 ppm.
Maximum inlet temperature is 85°F. Minimum inlet temperature is 45°F.

Warranty: All E4H-ECN controls are backed by a 1-year warranty. E4H-ECN pressure vessels have a 5-year warranty. All warranties are for parts and factory labor only, barring misuse or abuse. Warranties are specifically limited to the repair or replacement of the equipment.

Cal-Water has been selling, installing and servicing water purification equipment since **1946**.

Cal Water, 1961 Petra Lane, Placentia, CA 92870
(800) CAL-WATER (800) 225-9283
 FAX: (714) 792-0794
 Web Page / Email: www.cal-water.com

Orange County (714) 835-7878
 Los Angeles County (323) 663-8335
 San Diego County (619) 457-8411