



**WATER**

*"a better solution.."*

## Automatic Water Softener CF-2900 Series – 2" Valve 39 to 105 Gallons Per Minute

**CF-2900 Water Softeners** are a series of heavy duty, low cost units intended for general commercial applications, requiring flow rates of up to 105 gallons per minute. The CF-2900 Series are constructed of materials selected for long life and durability. The CF-2900 softener control will cycle thousands of times with essentially hands-off maintenance. The result is that the CF-2900 Series water softeners have become an industry standard.

### ADVANTAGES



- Simple and reliable loose tolerance control valve.
- Adjustable salt dosages. A CF-2900 water softener can be set at low salt dosage for use in areas with capacity/pound salt restrictions, OR a high salt dosage to achieve a hardness leakage of less than 1.0 ppm.
- CF-2900 water softeners contain premium durable 8% crosslinked, high capacity ion exchange softener resin greatly reducing rebedding frequency.
- The CF-2900 pressure vessel and brine tank are constructed from inert corrosion-proof materials. No more rusty softeners. The pressure vessels are FRP fiberglass tanks and the brine tank is molded polyethylene.

**CF-300-2**  
**Automatic Water Softener**

**For More Information Please Call  
1(800)CAL-WATER - (800) 225-9283**

## OPTIONS

- An optional turbine water meter is available for every **CF-2900** water softener. The meter counts the gallons of water being softened, and at an adjustable pre-set quantity, the meter will schedule a regeneration to take place at an off-hour. When the 90-minute regeneration process is completed, the regenerated tank is put back into service automatically.
- **CF-2900 Series** units can be fitted to handle hot water applications.
- In highly turbid waters, **CF-2900** softeners can be equipped with backwash filters.

## APPLICATIONS

**CF-2900 Series** water softeners are ideal for any commercial or industrial application such as restaurants, laundries, car washes, boilers, cooling towers, ice houses, pre-treatment for reverse osmosis systems, and any other application where low cost and absolute reliability are key purchasing considerations.

## FLOW RATES AND CAPACITIES

Model	Pipe Size	Flow Rate GPM Cont./ Peak**	Ft <sup>3</sup> Resin /Softener	Capacity In Grains	Softener		Brine Tank	
					Dia.	Ht.	Dia.	Ht.
CF-90-2	2"	39 / 54	3	90,000	14" X	65"	22" X	36"
CF-120-2	2"	47 / 64	4	120,000	16" X	65"	24" X	48"
CF-180-2	2"	60 / 70	6	180,000	22" X	60"	24" X	48"
CF-240-2	2"	68 / 91	8	240,000	24" X	60"	24" X	48"
CF-300-2	2"	68 / 91	10	300,000	24" X	71"	24" X	48"
CF-450-2	2"	85 / 100	15	450,000	30" X	72"	30" X	48"
CF-600-2	2"	85 / 100	20	600,000	36" X	72"	30" X	48"
CF-750-2	2"	90 / 105	25	750,000	36" X	72"	30" X	60"

Maximum inlet pressure is 80 psi. Minimum inlet pressure is 35 psi. Maximum chlorine or other oxidizer content is 0.5 ppm. Maximum inlet temperature is 90°F. Maximum turbidity is 5 NTU.

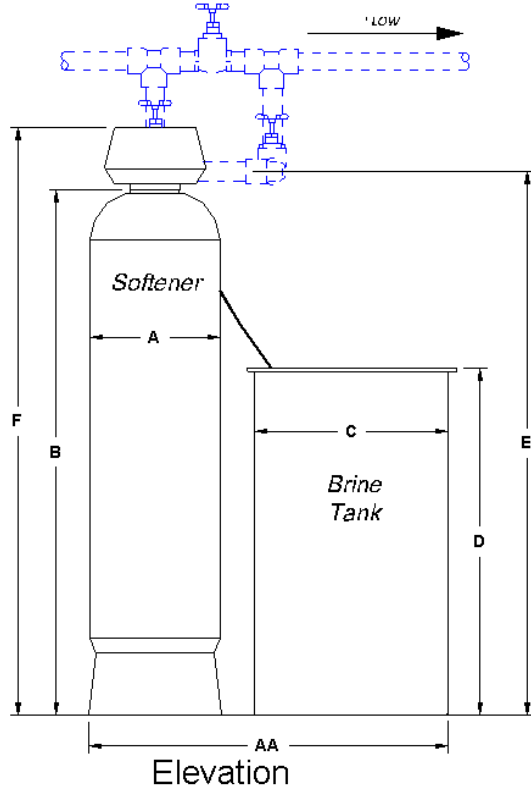
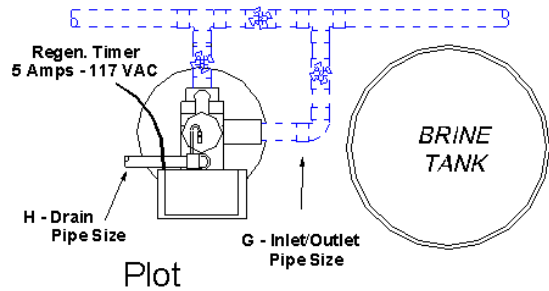
**Warranty:** All CF-2900 controls are backed by a 3-year warranty. CF-2900 pressure vessels have a 5-year warranty. All warranties are for parts and factory labor only, barring misuse or abuse. Warranties are specifically limited to the repair or replacement of the equipment.

**Cal-Water** has been selling, installing and servicing water purification equipment since **1946**.

Cal Water, 1961 Petra Lane, Placentia, CA 92870  
**(800) CAL-WATER** (800) 225-9283  
FAX: (714) 792-0794  
Web Page / Email: [www.cal-water.com](http://www.cal-water.com)

Orange County (714) 835-7878  
Los Angeles County (323) 663-8335  
San Diego County (858) 457-8411

# CF-2900 Series Automatic Water Softeners



Model	Dimensions are in inches								
	A	AA	B	C	D	E	F	G	H
CF-90-2	14	25	65	22	36	69	74	2	1
CF-120-2	16	28	65	24	48	69	74	2	1
CF-180-2	22	34	60	24	48	64	69	2	1
CF-240-2	24	36	60	24	48	64	69	2	1
CF-300-2	24	36	71	24	48	75	80	2	1
CF-450-2	30	45	72	30	48	76	81	2	1
CF-600-2	36	51	72	30	48	76	81	2	1
CF-750-2	36	51	72	30	60	76	81	2	1

**NOTES:**

LINES IN BLUE REPRESENT PLUMBING TO BE DONE BY CAL WATER AS AN OPTION, OR BY OTHERS.

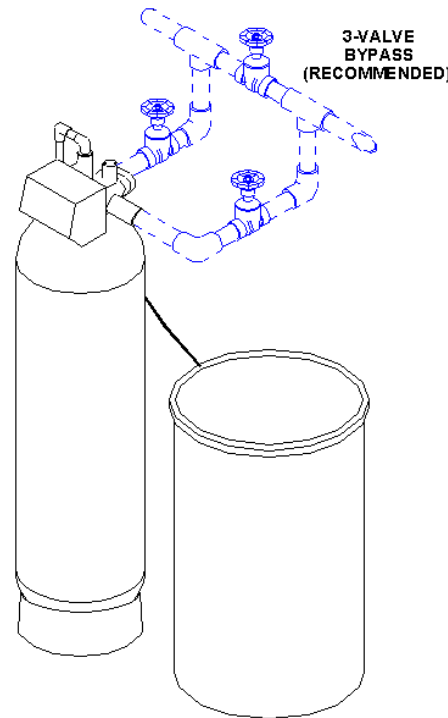
ILLUSTRATION OF THE RECOMMENDED METHOD OF INSTALLATION OF A CF-2900 SERIES WATER SOFTENER.

AN ELECTRICAL OUTLET NEAR THE EQUIPMENT IS REQUIRED TO RUN THE REGENERATION TIMER. (5 AMPS - 117 VAC)

DRAIN LINE SHOULD BE TO ATMOSPHERE TO PREVENT BACK PRESSURE.

**FEED WATER SPECIFICATIONS**

- MAXIMUM INLET PRESSURE = 80 PSI.
- MINIMUM INLET PRESSURE = 35 PSI.
- MAXIMUM CHLORINE/OXIDIZER CONTENT = 0.5 PPM.
- MAXIMUM INLET TEMPERATURE = 90°F.
- MAXIMUM TURBIDITY = 5 NTU.



Typical Installation

**Dimensions and Specifications**

10/2002 DRAWING NO.: CF-2900SoftLR-2.DWG



1961 Petra Lane, Placentia, CA 92870  
(800) CAL-WATER  
<http://www.cal-water.com>