

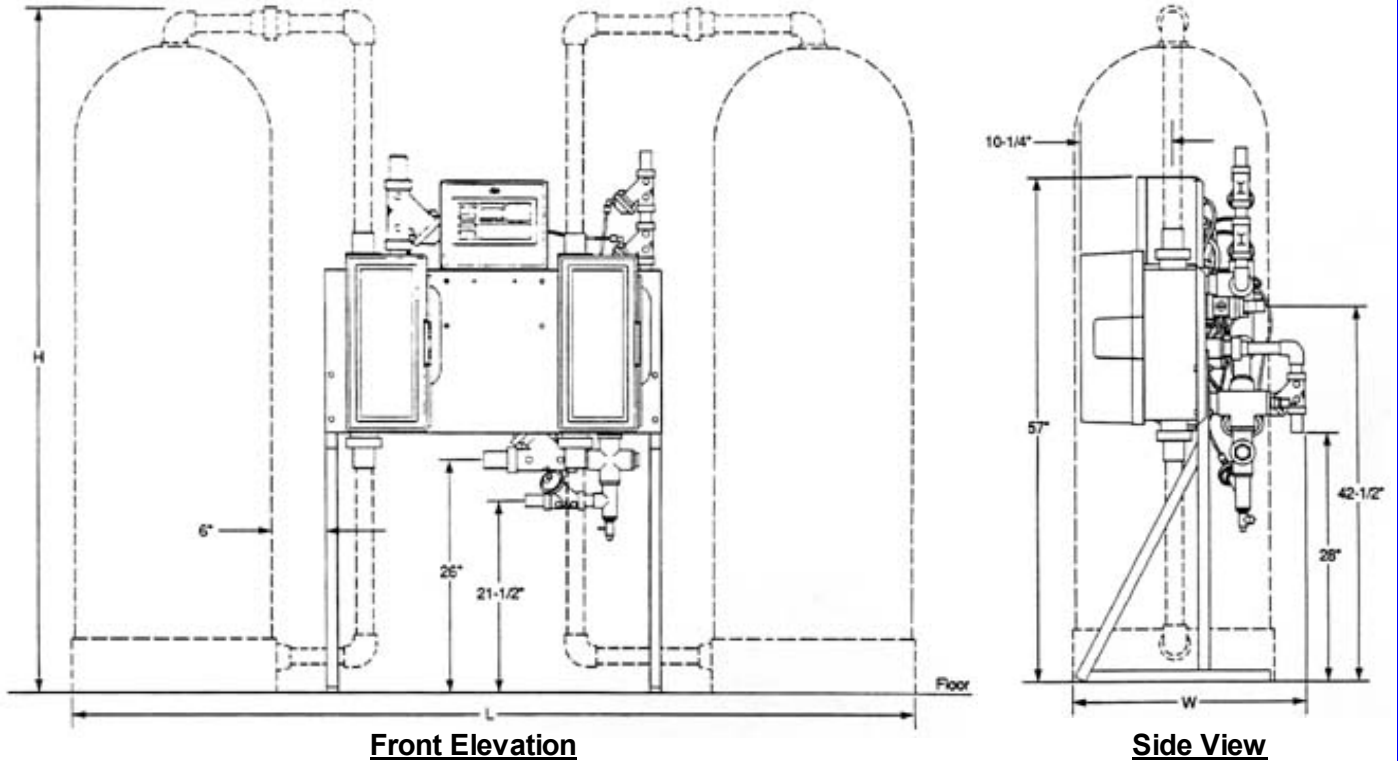


*"a better solution.."*

# Automatic Deionizer Systems AutoTrol 7850

For More Information Please Call  
1(800)CAL-WATER - (800) 225-9283

## AUTOTROL 7850 / 10-60 GPM



## DIMENSIONS AND CAPACITIES

Model	Tank Size (Inches)	Flow Rates gpm, (Lpm)	(delta)P at Nominal Flow Rates psi (bar)	Exchange Capacity (Grains CaCO <sub>3</sub> )	Resin Volume Each Tank (Ft <sup>3</sup> )	Approximate Overall Dimensions H x L x W Inches (cm)
7850-21	21 x 62	10 - 15, (37.9 - 56.8)	22 (1.5)	100,000	5	66-1/2 x 91-1/2 x 2, (168.9 x 232.4 x 63.5)
7850-24	24 x 71	20 - 30, (75.7 - 113.6)	25 (1.7)	200,000	10	75-1/2 x 97-1/2 x 28 (191.8 x 247.7 x 71.1)
7850-30	30 x 72	30 - 45, (113.6 - 170.3)	28 (1.9)	300,000	15	81-1/2 x 109-1/2 x 31 (207.0 x 278.1 x 78.7)
7850-36	36 x 72	40 - 60, (151.4 - 227.1)	32 (2.2)	400,000	20	81-1/2 x 121-1/2 x 40 (207.0 x 308.6 x 101.6)

*Example Installation*  
(Customer Specific Illustration)

**Autotrol 7850D  
Automatic Strong Base  
Duplex Deionizer System**

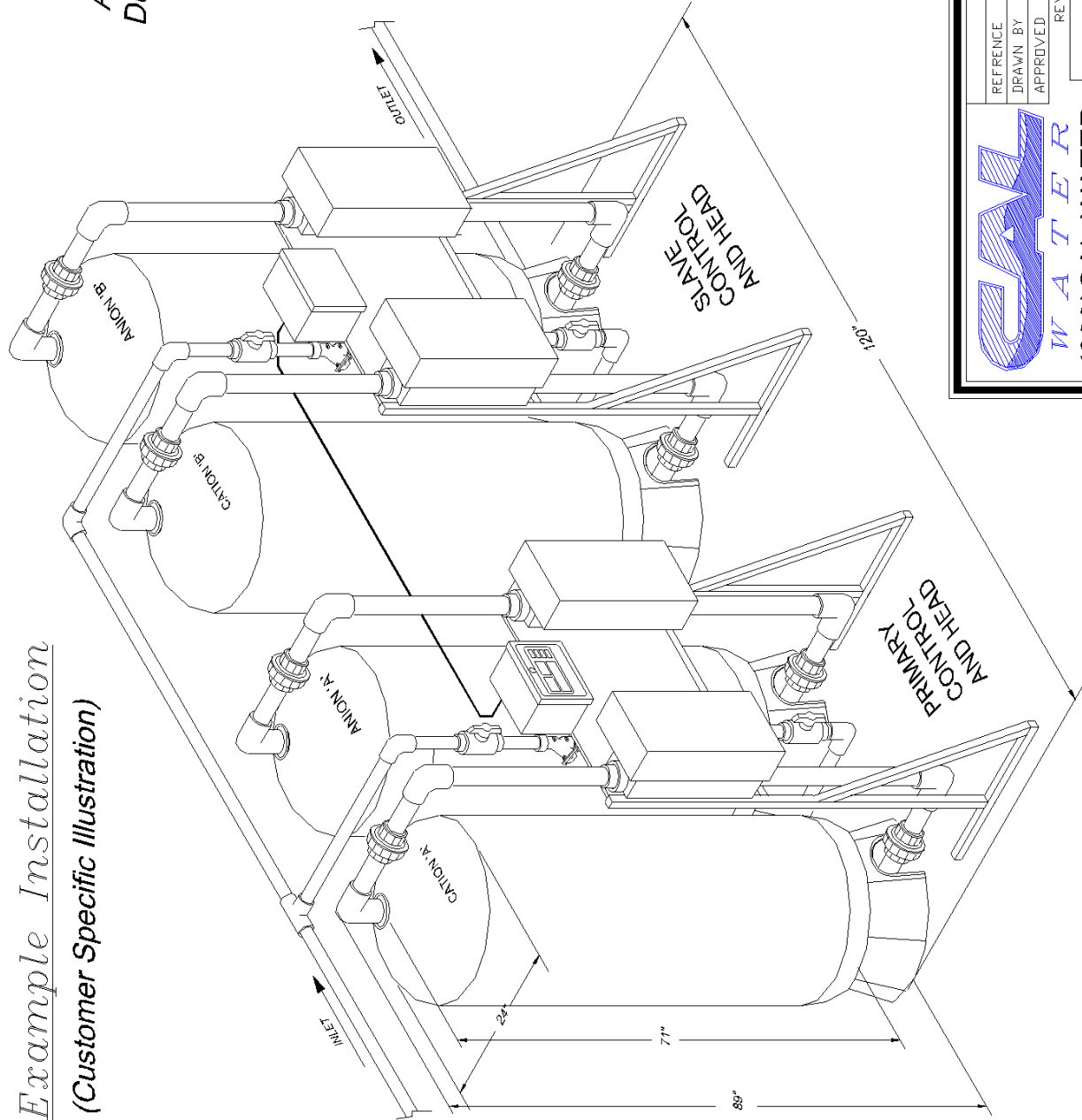
This example shows an alternating duplex system. This arrangement allows the customer to have deionized water 24/7.

**OPERATION:**

One set is on line at all times.

The other set is regeneration and in standby.

When the first set exhausts, the second set is automatically valved on-line while the exhausted set is automatically regenerated and placed in standby.



INIT		DATE		CUSTOMER	
REFERENCE	DNP	Example Duplex 7850			
DRAWN BY	NGA	DESCRIPTION: TANDEM 21" AUTO D.I.			
APPROVED		SCALE: NONE   DRAWING NO: 7850D.dwg			
REVISIONS					

**CAL**  
W A T E R  
(800) CAL-WATER  
www.cal-water.com

12/02/02