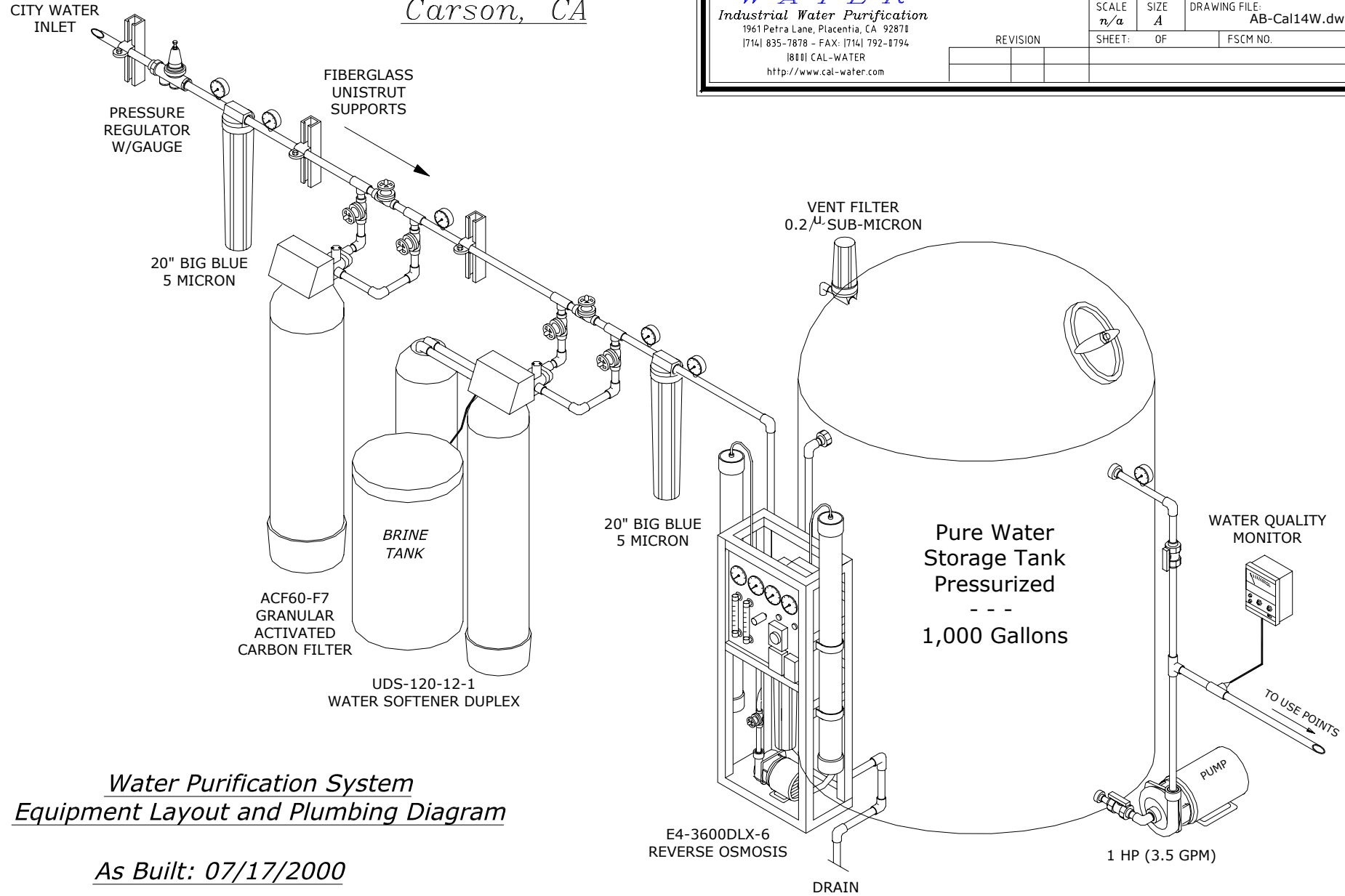


Mfg. Research
Carson, CA



Industrial Water Purification
 1961 Petra Lane, Placentia, CA 92871
 (714) 835-7878 - FAX: (714) 792-0794
 18001 CAL-WATER
 http://www.cal-water.com

REFERENCE:	INIT	DATE	CUSTOMER
DRAWN BY: DNP		7/00	Mfg. Research
APPROVED:			DESCRIPTION: Equipment and Plumbing Illustration
REVISION		SCALE: n/a	SIZE: A
		SHEET: OF	DRAWING FILE: AB-Cal14W.dwg
		FSCM NO.	



Water Purification System
Equipment Layout and Plumbing Diagram

As Built: 07/17/2000



Industrial Water Purification

1961 Petra Lane, Placentia, CA 92870

17141 835-7878 - FAX: 17141 792-0794

18001 CAL-WATER

http://www.cal-water.com

INIT	DATE	CUSTOMER	<i>The Water Store</i>	
REFERENCE:		DESCRIPTION:	3K R.O. SYSTEM W/PRETREATMENT	
DRAWN BY:	DNP 4/98	SCALE	SIZE	DRAWING FILE:
APPROVED:		n/a	A	AB-Cal16W.dwg
REVISION		SHEET:	OF	FSCM NO.

The Water Store
El Monte, CA

Water Purification System Components:

- 20" Cartridge Filter (5/μ)
- Auto Carbon Filter (GAC40)
- Auto Duplex Water Softener
- Reverse Osmosis System (TFC)
- Storage Tank (Opt.)
- Repressurization Pump (Opt.)

NOTES:

System as shown is an illustration of a Reverse Osmosis System depicting the flow order of the components.

The arrangement is typical but is not the only layout possible. The components can be re-arranged to conserve space as long as the component order is as shown.

The system can be skid mounted on a 24" X 36" skid. (Except the storage tank and repressurization pump.)

